

Flow Control

Manual Valves

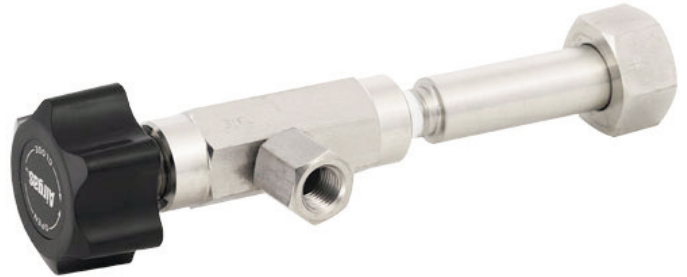
VALVES

Description: Manual flow control valves provide a simple, economical means of controlling the flow of gas directly from a cylinder. They are commonly used to control flow rates in continuous or semi-batch processes.

Our manual flow control valves are available in brass, 316 stainless steel, and Monel metal. All models feature PTFE packing and Monel stems.

These valves are equipped with a 1/4" FNPT outlet port, while hose and compression fitting adaptors are available options.

Note: These valves are designed to be connected directly to gas cylinders. Valves control flow and DO NOT control pressure. If pressure control is required, please select an appropriate model from our extensive line of pressure regulators.



Ordering Information

Product Number	Material
Y30-111(CGA)	Brass
Y30-411(CGA)	Stainless Steel
Y30-311(CGA)	Monel